



Biotics Research ~ What Sets us Apart

- *Live Active Vegetable Culture**
- *Micro-Emulsified Oily Nutrients**
- *Neo-Natal Glandulars**

At times excipients are used in the tableting and encapsulation processes, most are inert however At Biotics Research, we use a nutritionally potent vegetable culture matrix which provides naturally high concentrations of SOD and Catalase, both are powerful antioxidants that add significant value to our products. In fact, I have not found another supplement company in North America that carries naturally occurring SOD and Catalase enzymes from a plant matrix. Since the body recognizes plants as "food" this allows for a optimum absorption and a balanced "Oxidation/Reduction" potential process when digesting foods.

SOD and Catalase enzymes supply an abundance of free electrons during the digestion process which allows for free radicals to cleave to these electrons, rendering them inert and facilitating the "reduction" process much faster. The ultimate result would be an outcome with much less Free Radical Pathology and better digestion.

Vegetable culture base

SOD AND CATALASE
ENZYMES...



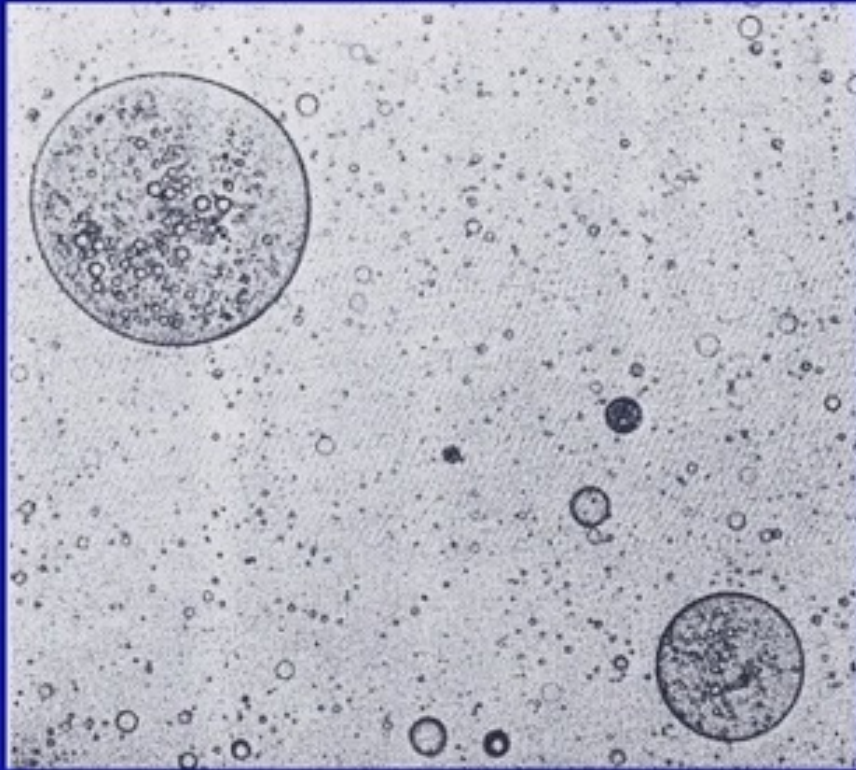
Emulsions & Nano Technology

Not All Emulsions Are Created Equal

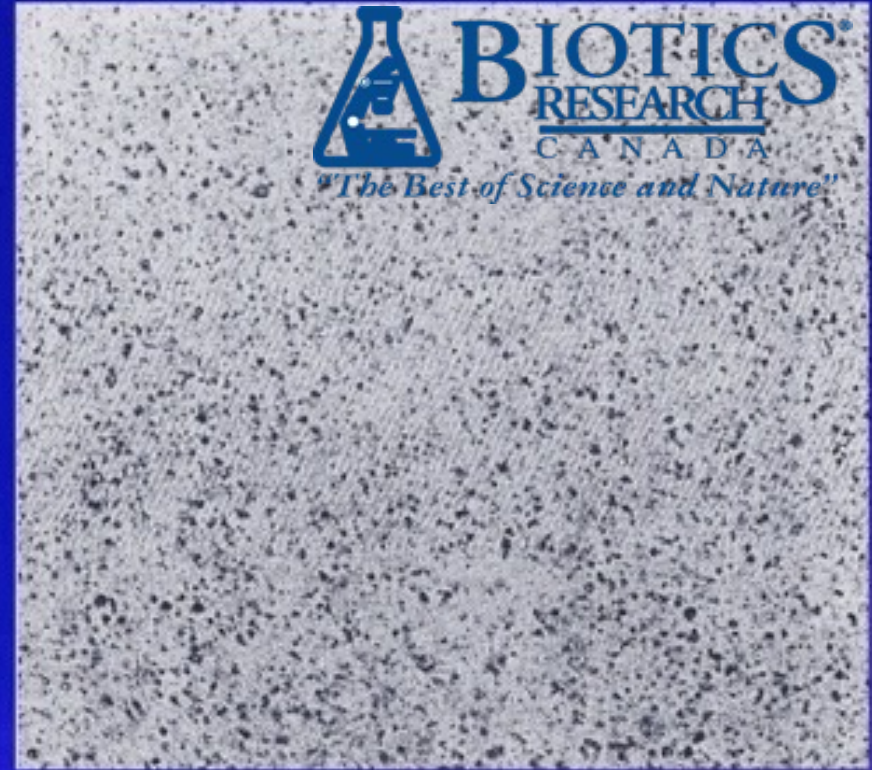


Biotics Research's Emulsions
Smallest Particle Size
Raises Blood Levels Faster





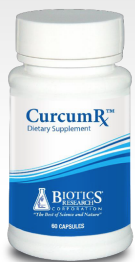
Other



Biotics Research

30 mg of *emulsified* CoQ10
raised blood levels equal to
90 mg of a *dry form* of CoQ10.

Introducing CurcumRx™



- A completely unique composition and delivery form
- This unique, standardized composition has been clinically demonstrated to safely deliver **5-6x greater bioavailability** versus the leading enhanced absorption turmeric ingredients.



The CurcumRx™ Complex (A) demonstrated superior performance to both Curcumin w/ oil and Curcumin w/ phospholipid with respect to extent of absorption and rate of absorption ($p < 0.01$)



Fig. B. Adult (bull thymus, showing loss of cortical area and enlargement of septa by fat cells (clear spaces). (16x)

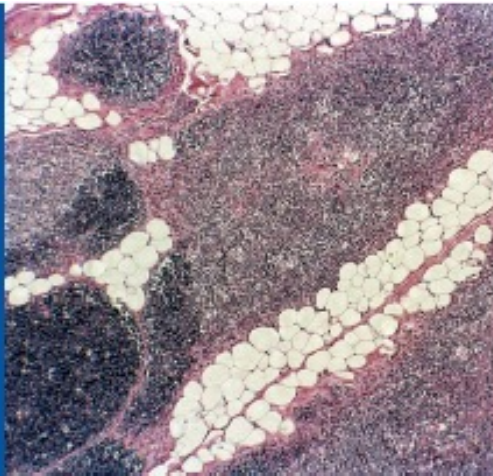
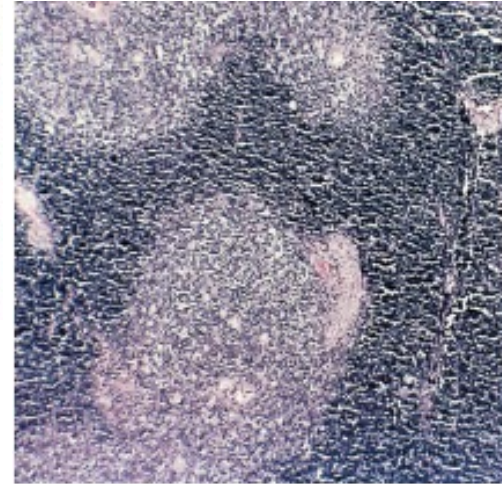


Fig. A. Neonatal thymus, showing extensive cortical area (dark) with medulla (pale). Septa are almost invisible. (16x)



Neo-Natal Glandulars - Histology

Tissue from newborn or Neo-Natal animals possess high anabolic activity and have a minimum exposure to environmental stressors. Atrophy, fatty infiltration, tissue degeneration and accumulation of oxidative waste products are not observed in tissue from newborn animals.

NOTE: Biotics Research does NOT harvest animals for their glandulars, rather it is a bi-product of an industry, we simply collect them.

<https://bioticscanada.com/images/companies/1/resource-pdf/NeoNatal%20GlandularsCanada%20LIT-033.pdf?1681850453392>

Neo-Natal Glandulars - Histology

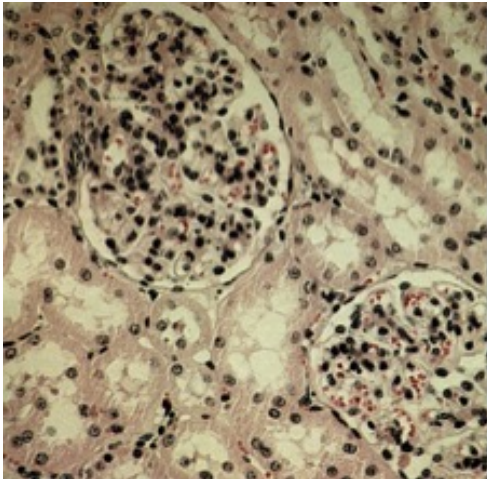
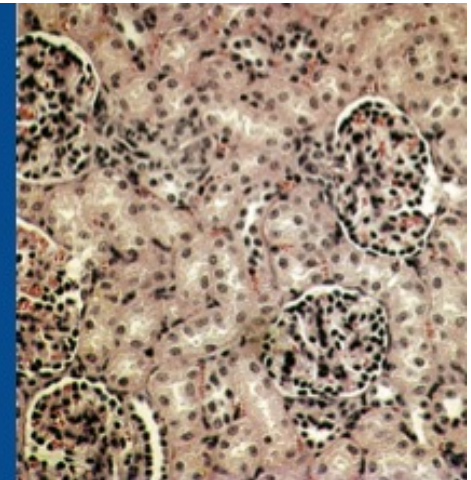


Fig. D. Adult (2 year-old heifer) kidney cortex with two glomeruli. Note the large lumen of the tubules with most containing debris, and the large size of the glomeruli compared to neonatal tissue. (63x)

Fig. C. Neonatal kidney cortex with glomeruli. Note the small size of the lumen in the surrounding tubules, and the close proximity of nuclei. (63x)



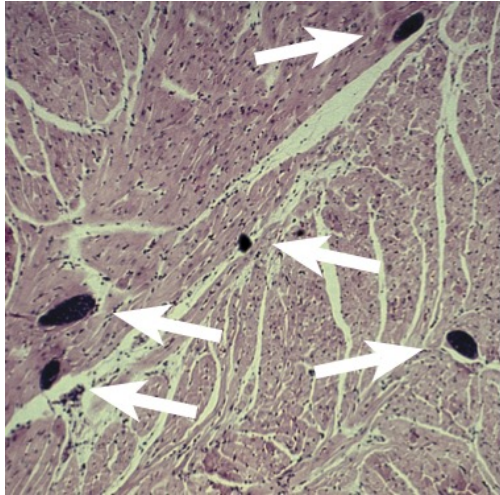
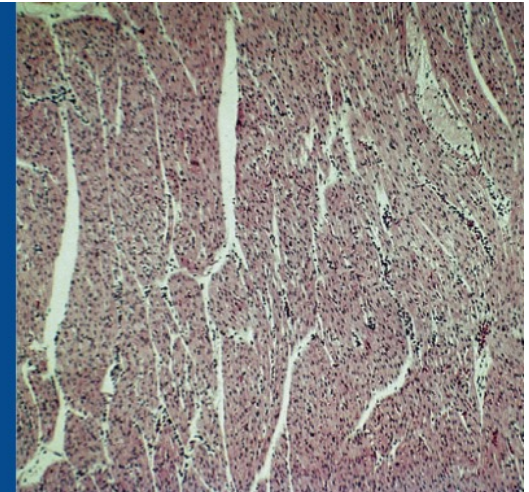


Fig. H. Adult (2 year-old heifer) heart (myocardium) with arrows pointing to five sacs of Sarcocystis species parasites. (16x)

Neo-Natal Glandulars - Histology

Fig. G Neonatal heart (myocardium). (16x)



Advanced Metals Detox Presentation

For over 30 years, I have been presenting protocols for Oral Chelation, this method is much safer (vegan provocative product) and effective to detoxify up to 15 toxic metals found in the feces. Please check in to our booth and sign up for a complete presentation on how to safely and effectively identify and detoxify toxic metals!

"Advanced Detox"

The Periodic Table of the Elements

The Relationship between Symptomatology & Toxic Metals Accumulation

1 H Hydrogen 1.00794																	2 He Helium 4.003														
3 Li Lithium 6.941	4 Be Beryllium 9.012182																	10 Ne Neon 20.1797													
11 Na Sodium 22.98976928	12 Mg Magnesium 24.30409																	18 Ar Argon 39.948													
19 K Potassium 39.0983	20 Ca Calcium 40.078	21 Sc Scandium 44.955910	22 Ti Titanium 47.867	23 V Vanadium 50.9415	24 Cr Chromium 51.9961	25 Mn Manganese 54.938049	26 Fe Iron 55.845	27 Co Cobalt 58.933200	28 Ni Nickel 58.6934	29 Cu Copper 63.546	30 Zn Zinc 65.39	31 Ga Gallium 69.723	32 Ge Germanium 72.61	33 As Arsenic 74.92160	34 Se Selenium 78.96	35 Br Bromine 79.904	36 Kr Krypton 83.80														
37 Rb Rubidium 85.4678	38 Sr Strontium 87.62	39 Y Yttrium 88.90585	40 Zr Zirconium 91.224	41 Nb Niobium 92.90638	42 Mo Molybdenum 95.94	43 Tc Technetium (98)	44 Ru Ruthenium 101.07	45 Rh Rhodium 102.90550	46 Pd Palladium 106.42	47 Ag Silver 107.8682	48 Cd Cadmium (112.41)	49 In Indium 114.818	50 Sn Tin 118.710	51 Sb Antimony 121.760	52 Te Tellurium 127.60	53 I Iodine 126.90447	54 Xe Xenon 131.29														
55 Cs Cesium 132.90545	56 Ba Barium 137.327	57 La Lanthanum 138.9055	58 Ce Cerium 140.12	59 Pr Praseodymium 140.90766	60 Nd Neodymium 144.242	61 Pm Promethium (145)	62 Sm Samarium 150.36	63 Eu Europium 151.964	64 Gd Gadolinium 157.25	65 Tb Terbium 158.92535	66 Dy Dysprosium 162.5001	67 Ho Holmium 164.93033	68 Er Erbium 167.259	69 Tm Thulium 168.93032	70 Yb Ytterbium 173.054	71 Lu Lutetium 174.967	72 Hf Hafnium 178.49	73 Ta Tantalum 180.9479	74 W Tungsten 183.84	75 Re Rhenium 186.207	76 Os Osmium 190.23	77 Ir Iridium 192.217	78 Pt Platinum 195.078	79 Au Gold 196.96655	80 Hg Mercury 200.59	81 Tl Thallium 204.3833	82 Pb Lead 207.2	83 Bi Bismuth 208.98038	84 Po Polonium (209)	85 At Astatine (210)	86 Rn Radon (222)
87 Fr Francium (223)	88 Ra Radium (226)	89 Ac Actinium (227)	90 Th Thorium (232)	91 Pa Protactinium (231)	92 U Uranium (238)	93 Np Neptunium (237)	94 Pu Plutonium (244)	95 Am Americium (243)	96 Cm Curium (247)	97 Bk Berkelium (247)	98 Cf Californium (251)	99 Es Einsteinium (252)	100 Fm Fermium (257)	101 Mn Mendelevium (258)	102 Nv Nobelium (259)	103 Lr Lawrencium (260)	104 Rf Rutherfordium (261)	105 Db Dubnium (262)	106 Sg Seaborgium (263)	107 Bh Bohrium (264)	108 Hs Hassium (265)	109 Mt Meitnerium (266)	110 Ds Darmstadtium (271)	111 Rg Roentgenium (272)	112 Cn Copernicium (285)	113 Nh Nihonium (284)	114 Fl Flerovium (289)	115 Mc Moscovium (288)	116 Lv Livermorium (293)	117 Ts Tennessine (294)	118 Og Oganesson (294)

POTENTIALLY TOXIC METALS				
METALS	RESULT mg/kg	REFERENCE RANGE	PERCENTILE	
			68 th	95 th
Mercury	0.066	<.05 w/o amalgams*		
Mercury	0.066	<.5 with amalgams*		
Antimony	0.108	< 0.080		
Arsenic	0.44	< 0.30		
Beryllium	0.024	< 0.009		
Bismuth	0.103	< 0.050		
Cadmium	0.39	< 0.50		
Copper	150	< 60		
Lead	0.70	< 0.50		
Nickel	17.0	< 8.0		
Platinum	< dl	< 0.003		
Thallium	0.023	< 0.020		
Tungsten	0.264	< 0.090		
Uranium	0.578	< 0.120		

% WATER CONTENT							
	RESULT % H ₂ O	EXPECTED RANGE	2SD LOW	1SD LOW	MEAN 72.5%	1SD HIGH	2SD HIGH
% WATER CONTENT	75.8	60-85%					

POTENTIALLY TOXIC METALS				
METALS	RESULT mg/kg	REFERENCE RANGE	PERCENTILE	
			68 th	95 th
Mercury	0.068	<.05 w/o amalgams*		
Mercury	0.068	<.5 with amalgams*		
Antimony	0.042	< 0.080		
Arsenic	0.08	< 0.30		
Beryllium	0.004	< 0.009		
Bismuth	0.060	< 0.050		
Cadmium	0.42	< 0.50		
Copper	110	< 60		
Lead	0.74	< 0.50		
Nickel	7.0	< 8.0		
Platinum	< dl	< 0.003		
Thallium	0.024	< 0.020		
Tungsten	0.077	< 0.090		
Uranium	0.061	< 0.120		

% WATER CONTENT							
	RESULT % H ₂ O	EXPECTED RANGE	2SD LOW	1SD LOW	MEAN 72.5%	1SD HIGH	2SD HIGH
% WATER CONTENT	73.8	60-85%					

TOXIC METALS				
		RESULT mg/kg Dry Wt	REFERENCE INTERVAL	PERCENTILE 68 th 95 th
Mercury	(Hg)	0.060	<.05 w/o amalgams*	
Mercury	(Hg)	0.060	<.5 with amalgams*	
Antimony	(Sb)	0.060	< 0.080	
Arsenic	(As)	0.42	< 0.30	
Beryllium	(Be)	0.010	< 0.009	
Bismuth	(Bi)	0.049	< 0.050	
Cadmium	(Cd)	0.60	< 0.50	
Copper	(Cu)	140	< 60	
Lead	(Pb)	0.34	< 0.50	
Nickel	(Ni)	6.9	< 8.0	
Platinum	(Pt)	< dl	< 0.003	
Thallium	(Tl)	0.019	< 0.020	
Tungsten	(W)	0.175	< 0.090	
Uranium	(U)	0.111	< 0.120	

WATER CONTENT							
	RESULT % H ₂ O	REFERENCE INTERVAL	-2SD	-1SD	MEAN 72.5%	+1SD	+2SD
% Water Content	76.9	60 - 85%					

Toxic Metals	Result	Unit	Percentile		Reference Interval			
			68 th	95 th				
Antimony	0.027	mg/kg Dry Wt			< 0.050			
Arsenic	0.51	mg/kg Dry Wt			< 0.20			
Beryllium	0.048	mg/kg Dry Wt			< 0.011			
Bismuth	0.034	mg/kg Dry Wt			< 0.100			
Cadmium	0.30	mg/kg Dry Wt			< 0.50			
Cesium	0.149	mg/kg Dry Wt			< 0.1			
Copper	96	mg/kg Dry Wt			< 60			
Gadolinium	0.118	mg/kg Dry Wt			< 0.03			
Lead	0.61	mg/kg Dry Wt			< 0.30			
Manganese	182.1	mg/kg Dry Wt			< 200			
Mercury	0.026	mg/kg Dry Wt			< 0.050			
Nickel	14.0	mg/kg Dry Wt			< 8.0			
Platinum	<dl	mg/kg Dry Wt			< 0.003			
Thallium	0.025	mg/kg Dry Wt			< 0.020			
Tungsten	0.293	mg/kg Dry Wt			< 0.130			
Uranium	0.149	mg/kg Dry Wt			< 0.100			
Water Content	Result	Unit	-2SD	-1SD	Mean	+1SD	+2SD	Reference Interval
Water Content	76.3	%						66.3–78.8

Toxic Metals	Result	Unit	Percentile		Reference Interval
			68 th	95 th	
Antimony	0.020	mg/kg Dry Wt			< 0.050
Arsenic	0.06	mg/kg Dry Wt			< 0.20
Beryllium	0.004	mg/kg Dry Wt			< 0.011
Bismuth	0.004	mg/kg Dry Wt			< 0.100
Cadmium	0.24	mg/kg Dry Wt			< 0.50
Cesium	0.084	mg/kg Dry Wt			< 0.1
Copper	84	mg/kg Dry Wt			< 60
Gadolinium	0.012	mg/kg Dry Wt			< 0.03
Lead	0.09	mg/kg Dry Wt			< 0.30
Manganese	84.03	mg/kg Dry Wt			< 200
Mercury	0.031	mg/kg Dry Wt			< 0.050
Nickel	9.0	mg/kg Dry Wt			< 8.0
Platinum	<dl	mg/kg Dry Wt			< 0.003
Thallium	0.015	mg/kg Dry Wt			< 0.020
Tungsten	0.028	mg/kg Dry Wt			< 0.130
Uranium	0.048	mg/kg Dry Wt			< 0.100



Thank you for taking the time to view my presentation!

<https://www.bioticscanada.com>
orders@bioticscan.com

(905) 476-3554
(416) 318-8871 Caron DeVita (cell)